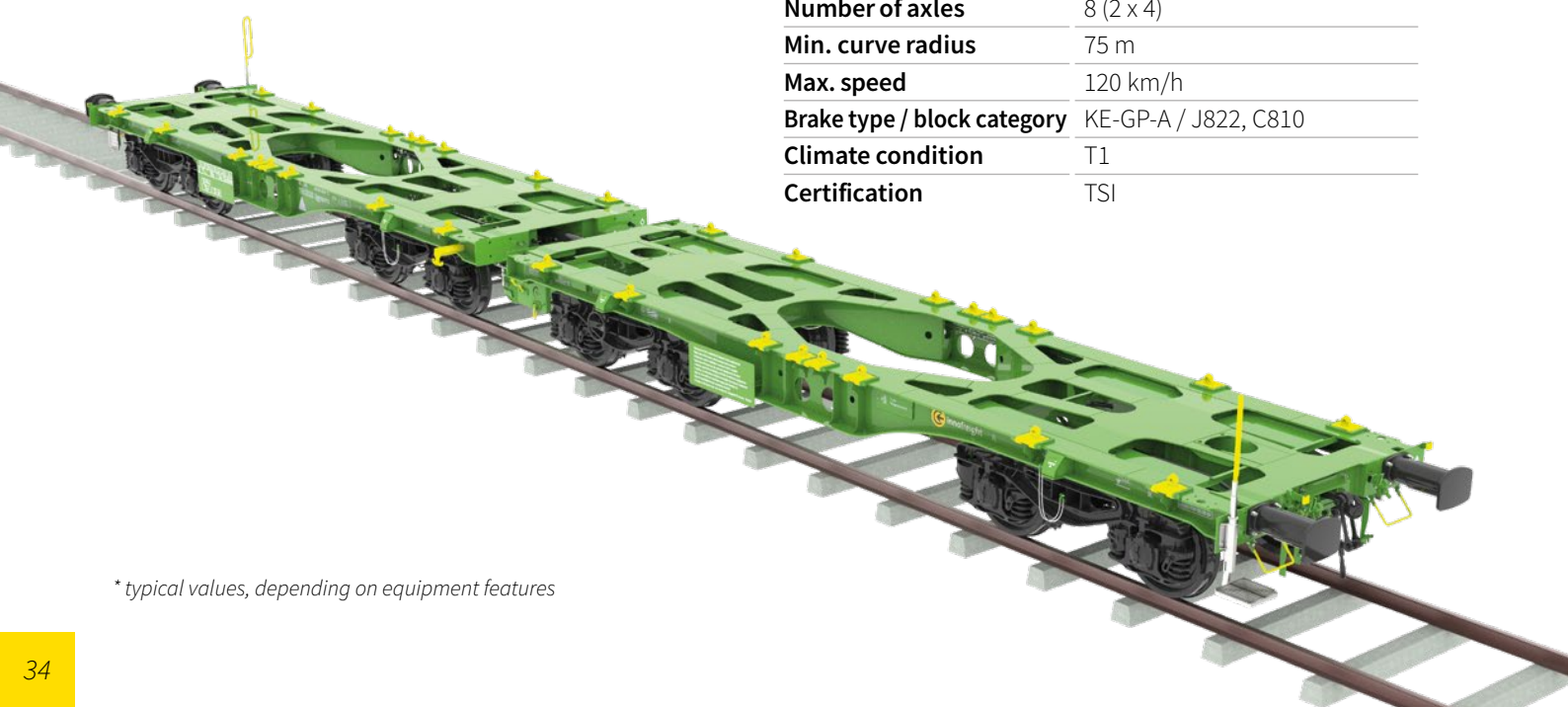


2x30 ft InnoWaggon

The 2x30 ft InnoWaggon is the shortest member of the InnoWaggon family. Compared to longer wagons, it has a higher load per meter so that, depending on requirements, shorter trains or higher payload are possible with the same train length.

This makes the wagon suitable for all types of goods with a very high specific weight, such as those required for the supply of raw materials in the metal industry. The 2x30 ft InnoWaggon is also a top choice for transporting finished metal products.

Technical data 2x30 ft InnoWaggon*	
Classification	Sggmmrrs
Classification code	4658
Track class	A, B1, B2, C2, C3, C4, D2, D3, D4
Tare weight	28.4 t (2 x 14.2 t)
Max. payload	151.6 t
Max. axle load	22.5 t
Max. meter load	8.00 t/m
Max. container pins	32
Floor height above rail level	1,155 mm
Loading length	2 x 10,310 mm
Length over buffer	22,500 mm
Width	2,874 mm
Track gauge	1,435 mm
Dist. between bogie pins	6,500 mm
Bogie wheel base	1,800 mm
Wheelset diameter	920 mm
Number of axles	8 (2 x 4)
Min. curve radius	75 m
Max. speed	120 km/h
Brake type / block category	KE-GP-A / J822, C810
Climate condition	T1
Certification	TSI



* typical values, depending on equipment features

RockTainer ORE

Loading volume
per container: 47 m³
per double wagon: 94 m³

Length: 30 ft

Max. payload per double wagon: 138 t

Loaded goods:
iron ore, ore pellets,
ore concentrate, limestone

Unloading:
sudden unloading
into hopper



DryTainer XM

Loading volume
per container: 22 m³
per double wagon: 88 m³

Length: 13 ft

Max. payload per double wagon: 140 t

Loaded goods:
DRI (direct reduced iron) and
other moisture sensitive bulk goods

Unloading:
dosed gravity unloading with forklift
or stationary unloading machine





MonTainer XM

Loading volume
per container: 23.6 m³
per double wagon: 94.4 m³

Length: 13 ft

Max. payload per double wagon: 143.3 t

Loaded goods:
iron ore, ore pellets, limestone

Unloading:
forklift or stationary unloading machine

MonTainer XML II

Loading volume
per container: 27 m³
per double wagon: 108 m³

Length: 15 ft

Max. payload per double wagon: 143.8 t

Loaded goods:
iron ore, ore concentrate, fine ore, limestone

Unloading:
forklift or stationary unloading machine



MonTainer XML

Loading volume
per container: 30 m³
per double wagon: 120 m³

Length: 15 ft++

Max. payload per double wagon: 141.5 t

Loaded goods:
iron ore, limestone

Unloading:
forklift or stationary unloading machine

MonTainer XXXML

Loading volume
per container: 43 m³
per double wagon: 172 m³

Length: 15 ft++

Max. payload per double wagon: 140 t

Loaded goods:
coal, coke, limestone

Unloading:
forklift or stationary unloading machine





CoilPallet

- Length:** 10 ft
- Max. payload per double wagon:** 141.8 t
- Loaded goods:**
Coils (Ø: 800-2,250 mm, weight: 35.75 t, temperature: up to 500 °C)
- Loading width:** 2,170 mm
- Loaded goods:**
steel slabs, blooms, pipes
- Loading width:** 2,652 mm
- Unloading:**
unloading crane or forklift



SlurryTainer

- Loading volume per container:** 43 m³
per double wagon: 86 m³
- Length:** 30 ft
- Max. payload per double wagon:** 142 t
- Loaded goods:**
Slurry, glue
- Unloading:**
unloading by gravitation



product video

InnoTainer Coils

- Number of coils per container:** 3
per double wagon: 6
- Length:** 30 ft
- Max. payload per double wagon:** 142 t
- Loaded goods:**
Coils
- Unloading:**
unloading crane or forklift



InnoTainer Coils LITE

- Number of coils per container:** 3
per double wagon: 6
- Length:** 30 ft
- Max. payload per double wagon:** 143 t
- Loaded goods:**
Coils
- Unloading:**
unloading crane or forklift



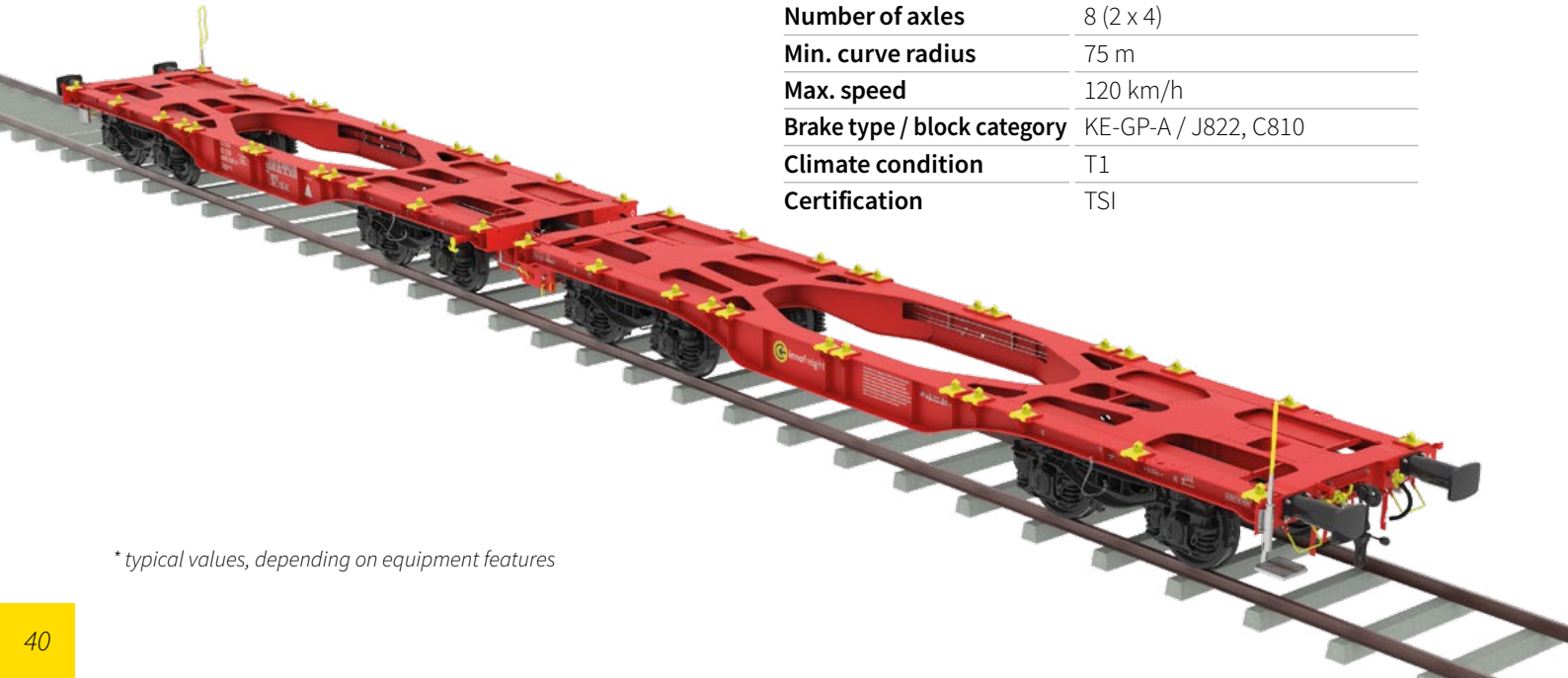
2x40 ft InnoWaggon

The 2x40 ft InnoWaggon was the first member of the InnoWaggon family and is the perfect combination of payload and loading length for many types of cargo.

The wagon is best suited for goods with high mass, such as building materials, ores, limestone or even grains.

The 2x40 ft InnoWaggon is also available as a Finno version for the 1,524 mm broad gauge commonly used in Eastern Europe.

Technical data 2x40 ft InnoWaggon*	
Classification	Sggrrs
Classification code	4854
Track class	A, B1, B2, C2, C3, C4, D2, D3, D4
Tare weight	29.7 t (2 x 14.85 t)
Max. payload	150.3 t
Max. axle load	22.5 t
Max. meter load	6.76 t/m
Max. container pins	48
Floor height above rail level	1,155 mm
Loading length	2 x 12,370 mm
Length over buffer	26,620 mm (long stroke buffer: 26,710 mm)
Width	2,878 mm
Track gauge	1,435 mm (Finno: 1,524 mm)
Dist. between bogie pins	8,070 mm
Bogie wheel base	1,800 mm
Wheelset diameter	920 mm
Number of axles	8 (2 x 4)
Min. curve radius	75 m
Max. speed	120 km/h
Brake type / block category	KE-GP-A / J822, C810
Climate condition	T1
Certification	TSI



* typical values, depending on equipment features

MonTainer XM

Loading volume
per container: 23.6 m³
per double wagon: 141.6 m³

Length: 13 ft

Max. payload per double wagon: 139.1 t

Loaded goods:
building material, coal, iron ore

Unloading:
forklift or stationary unloading machine



MonTainer XM 2000

Loading volume
per container: 19 m³
per double wagon: 114 m³

Length: 13 ft

Max. payload per double wagon: 139.4 t

Loaded goods:
building material, soil, crushed stone, excavation material, rubble

Unloading:
forklift or stationary unloading machine





MonTainer XXM

Loading volume
per container: 29 m³
per double wagon: 174 m³

Length: 13 ft

Max. payload per double wagon: 136.2 t

Loaded goods:
building material, coal, iron ore

Unloading:
forklift or stationary unloading machine



product video



MonTainer XXL

Loading volume
per container: 46 m³
per double wagon: 184 m³

Length: 20 ft

Max. payload per double wagon: 137.3 t

Loaded goods:
coal, coke

Unloading:
forklift or stationary unloading machine



product video

InnoTainer Dry XXM

Loading volume
per container: 23 m³
per double wagon: 138 m³

Length: 13 ft

Max. payload per double wagon: 134 t

Loaded goods:
urea, moisture sensitive free-flowing bulk goods

Unloading:
reachsteaker, forklift or portrotator



DryTainer XM

Loading volume
per container: 22 m³
per double wagon: 132 m³

Length: 13 ft

Max. payload per double wagon: 133.5 t

Loaded goods:
salt, cement clinker and other moisture sensitive bulk goods

Unloading:
dosed gravity unloading with forklift or stationary unloading machine





ChemieTainer

(intermodal)

Loading volume
per container: 32.5 m³
per double wagon: 130 m³

Length: 20 ft

Max. payload per double wagon: 136.6 t

Loaded goods:
corrosive bulk materials

Unloading:
truck tipping chassis
or tipping platform



OpenSideTainer XX20

Loading volume
per container: 38.5 m³
per double wagon: 154 m³

Length: 20 ft

Max. payload per double wagon: 137 t

Loaded goods:
recycled wood, palletized goods

Unloading:
forklift or stationary unloading machine

GrainTainer

Loading volume
per container: 33 m³
per double wagon: 132 m³

Length: 20 ft

Max. payload per double wagon: 129.6 t

Loaded goods:
grain, corn, soy

Unloading:
sudden unloading into hopper



GrainTainer II

Loading volume
per container: 41 m³
per double wagon: 164 m³

Length: 20 ft

Max. payload per double wagon: 128 t

Loaded goods:
grain, corn, soy

Unloading:
reachsteaker, forklift or portrotator





ScrapTainer

Loading volume
per container: 71.7 m³
per double wagon: 143.4 m³

Length: 40 ft

Max. payload per double wagon: 138.6 t

Loaded goods:
scrap metal, iron ore, coal

Unloading:
magnetic unloading or unloading crane

product video



BoxOnBox-System

Loading volume
per container: 32.5 m³
per double wagon: 65 m³

Length: 40 ft

Max. payload per double wagon: 140.7 t

Loaded goods:
HBI, scrap, iron ore, coal

Unloading: unloading crane



product video



CoilPallet

Length: 10 ft

Max. payload per double wagon: 143 t

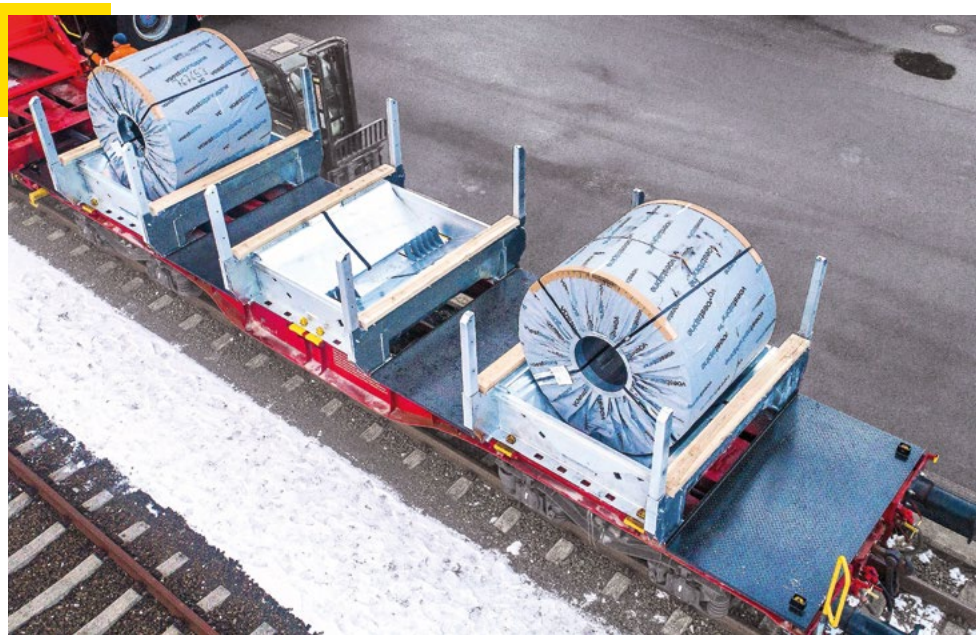
Loaded goods:
Coils (Ø: 800-2,250 mm, weight: 35.75 t, temperature: up to 500 °C)

Loading width: 2,170 mm

Loaded goods:
steel slabs, blooms, pipes

Loading width: 2,652 mm

Unloading:
unloading crane or forklift



SteelPallet

Length: 10 ft

Max. payload per double wagon: 143.7 t

Loaded goods:
steel slabs, blooms, pipes

Unloading:
unloading crane or forklift





RockTainer SAND

Loading volume
per container: 68 m³
per double wagon: 136 m³

Length: 40 ft

Max. payload per double wagon: 134.3 t

Loaded goods:
sand, gravel

Unloading:
sudden unloading into hopper



RockTainer INFRA

Loading volume
per container: 51 m³
per double wagon: 102 m³

Length: 40 ft

Max. payload per double wagon: 136 t

Loaded goods:
track ballast

Unloading:
adjustable unloading to the centre or to the sides

CityLogistics Container

(intermodal)

Loading volume
per container: 25 m³
per double wagon: 100 m³

Length: 20 ft

Max. payload per double wagon: 137.7 t

Loaded goods:
natural gypsum, building materials,
excavation material, rubble



Unloading:
forklift or stationary unloading machine



SurfaceWaterTank

Loading volume
per container: 62 m³
per double wagon: 124 m³

Length: 40 ft

Max. payload per double wagon: 140.3 t

Loaded goods:
saline surface water

Unloading:
gravitation – hose connection
DN 100 or flange DN 150





AcidTainer

(broad gauge)

Loading volume
per container: 49 m³
per double wagon: 98 m³

Length: 40 ft

Max. payload per
double wagon: 136.5 t

Loaded goods:
phosphoric acid, nitric acid,
sulphuric acid

Unloading:
gravitation – hose connection
DN 100, camlock



OreTainer LM

(broad gauge)

Loading volume
per container: 18.1 m³
per double wagon: 108.6 m³

Length: 13 ft

Max. payload per
double wagon: 140 t

Loaded goods:
ore

Unloading:
forklift or stationary
unloading machine

InnoTainer Coils

(broad gauge)

Number of coils
per container: 7
per double wagon: 14

Length: 40 ft

Max. payload per
double wagon: 140.6 t

Loaded goods:
Coils

Unloading:
unloading crane or forklift



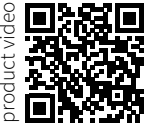
SmartGigaWood Sweden

Loading volume: 255 m³

Max. payload per
double wagon: 142.1 t

Loaded goods:
timber, 4 to 6 m

Unloading:
logstacker or
highlifter



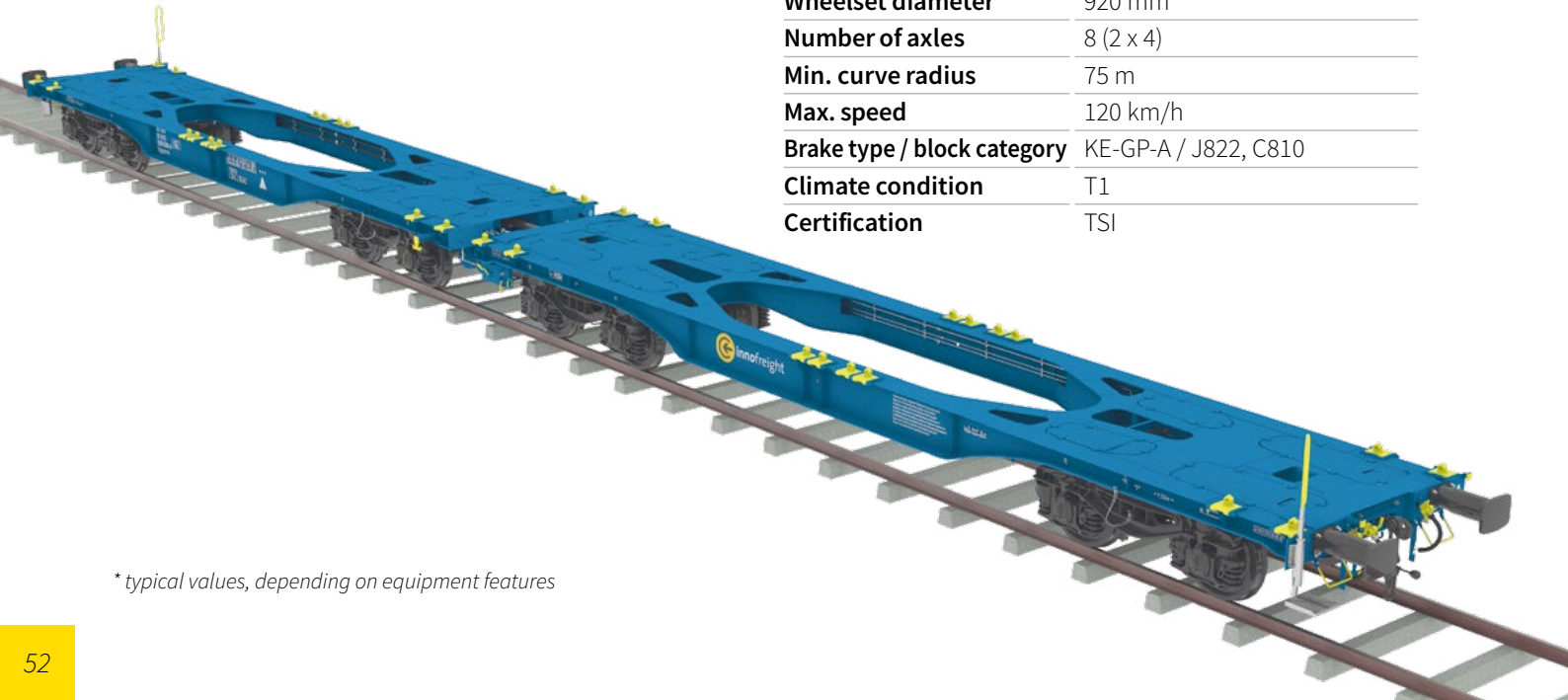
2x45 ft InnoWaggon

The 2x45 ft InnoWaggon is the longest member of the InnoWaggon family and has a greater loading length compared to the shorter wagons, combined with an equally high payload.

The longer loading surface compared to other wagons and the resulting higher loading volume enables the efficient transportation of goods with a high volume at a lower specific weight or very long goods.

The 2x45 ft InnoWaggon is also available as an Ibero version for the Iberian broad gauge.

Technical data 2x45 ft InnoWaggon*	
Classification	Sggmrrs
Classification code	4657
Track class	A, B1, B2, C2, C3, C4, D2, D3, D4
Tare weight	29.9 t (2 x 14.95 t)
Max. payload	150.1 t
Max. axle load	22.5 t
Max. meter load	6.09 t/m
Max. container pins	32
Floor height	
above rail level	1,155 mm
Loading length	2 x 13,820 mm
Length over buffer	29,520 mm (long stroke buffer: 29,610 mm)
Width	2,890 mm
Track gauge	1,435 mm (Ibero: 1,668 mm)
Dist. between bogie pins	9,520 mm
Bogie wheel base	1,800 mm
Wheelset diameter	920 mm
Number of axles	8 (2 x 4)
Min. curve radius	75 m
Max. speed	120 km/h
Brake type / block category	KE-GP-A / J822, C810
Climate condition	T1
Certification	TSI



* typical values, depending on equipment features

WireStanchion System

Loading volume:
38 wire rod bundles

**Max. payload per
double wagon:** 141 t

Loaded goods:
wire coils, tube bundles, flat products,
long goods or construction steel

Unloading:
unloading crane or forklift



HighPerformance Base

Loading length: 2x13.65 m

**Max. payload per
double wagon:** 147.5 t

Loaded goods:
pipes, long steel products,
concrete finished parts

Unloading:
unloading crane or forklift





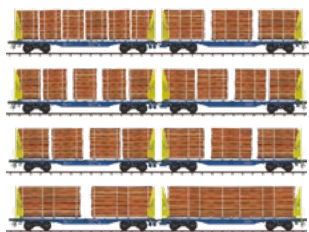
Smart GigaWood

Loading volume: 220 m³

Max. payload per double wagon: 141 t

Loaded goods: timber, 2 to 12 m,
depending on the number of stanchions

Unloading:
logstacker or highlifter



product video

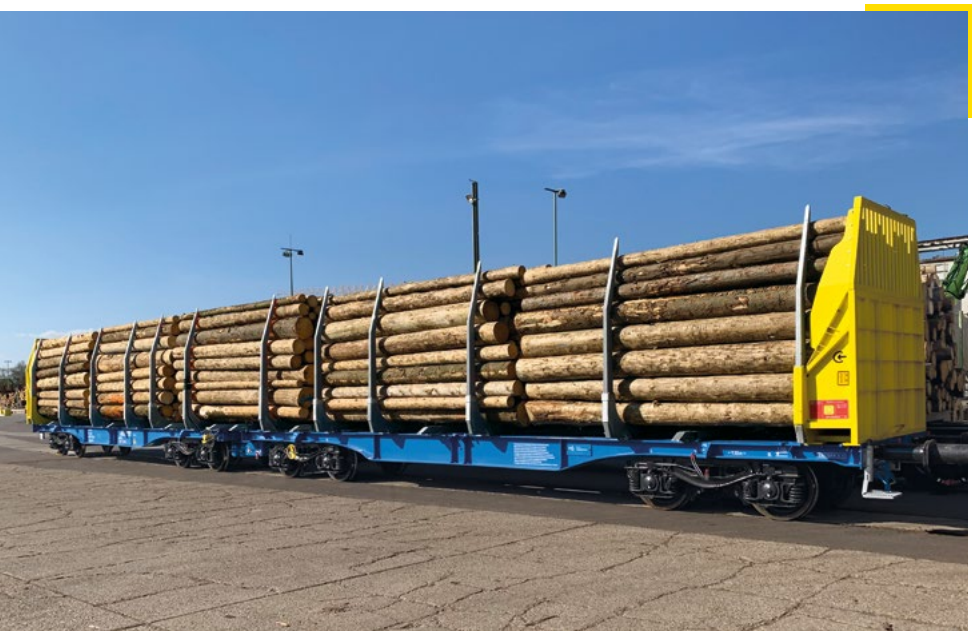
Smart GigaWood Round & Sawn

Loading volume: 220 m³

Max. payload per double wagon: 144 t

Loaded goods:
timber, 5 m or 4/6/12 m,
sawn timber packs

Unloading:
logstacker, highlifter or
unloading crane or forklift



SmartGigaWood 5x5

Loading volume: 225 m³

Max. payload per double wagon: 144 t

Loaded goods:
timber, 5 m or 4, 6 or 12 m

Unloading:
logstacker or highlifter



CemTainer

(intermodal)

Loading volume
per container: 32 m³
per double wagon: 128 m³

Length: 22.5 ft

Max. payload per double wagon:
4x30 t for the intermodal traffic

Loaded goods:
cement

Unloading:
compressed air
discharge with tilting



product video





DryTainer XL

Loading volume
per container: 26 m³
per double wagon: 156 m³

Length: 15 ft

Max. payload per double wagon: 132.1 t

Loaded goods:
lythium ore, quicklime and other moisture sensitive bulk goods

Unloading:
dosed gravity unloading with forklift or stationary unloading machine



DryTainer XXL

Loading volume
per container: 32 m³
per double wagon: 192 m³

Length: 15 ft

Max. payload per double wagon: 130.5 t

Loaded goods:
wood pellets, grain and other moisture sensitive bulk goods

Unloading:
dosed gravity unloading with forklift or stationary unloading machine

MonTainer XXL & XXLL

Loading volume
per container: 46 m³ (XXL) & 57 m³ (XXLL)
per double wagon: 206 m³

Length: 20 ft & 25 ft

Max. payload per double wagon: 138.5 t

Loaded goods:
coal, coke

Unloading:
forklift or stationary unloading machine

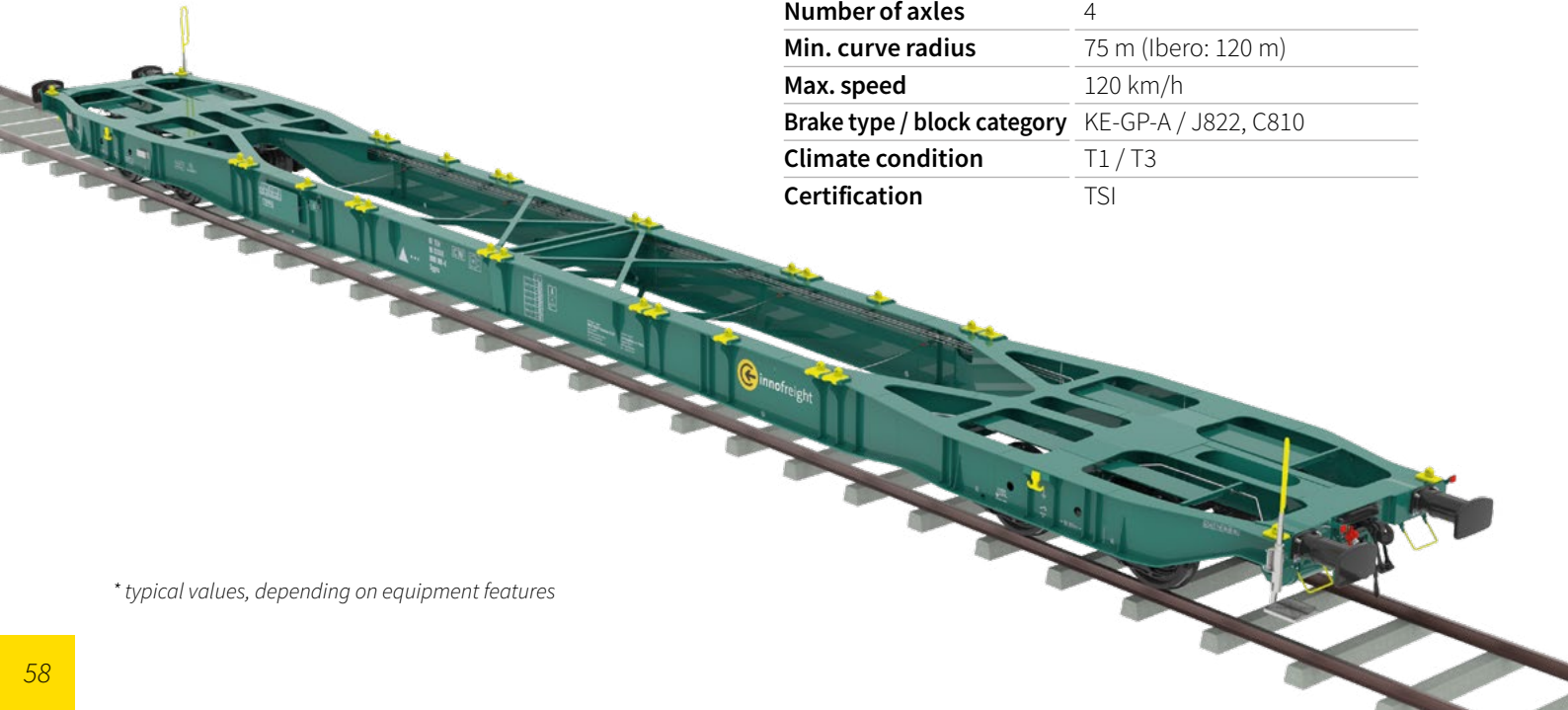


80 ft InnoWaggon

The 80 ft InnoWaggon is the newest member of the InnoWaggon family. In contrast to the other InnoWaggon types, it is only a single-piece wagon. The wagon, which is also weight-optimized, is the ideal base for light (finished) products, very long products and for transporting intermodal or standard ISO containers. The wagon has around 7 percent less tare weight than comparable 80 ft wagons.

The one-piece 80 ft InnoWaggon is also available as an Ibero version for the Iberian broad gauge.

Technical data 80 ft InnoWaggon*	
Classification	Sggn
Classification code	4561
Track class	A, B1, B2, C2, C3, C4, D2, D3, D4
Tare weight	19.7 t
Max. payload	70.3 t
Max. axle load	22.5 t
Max. meter load	3,50 t/m
Max. container pins	36
Floor height above rail level	1,155 mm
Loading length	24,470 mm
Length over buffer	25,710 mm
Width	3,068 mm
Track gauge	1,435 mm (Ibero: 1,668 mm)
Dist. between bogie pins	19,070 mm
Bogie wheel base	1,800 mm
Wheelset diameter	920 mm
Number of axles	4
Min. curve radius	75 m (Ibero: 120 m)
Max. speed	120 km/h
Brake type / block category	KE-GP-A / J822, C810
Climate condition	T1 / T3
Certification	TSI



* typical values, depending on equipment features

WoodTainer XXL

Loading volume
per container: 46 m³
per wagon: 184 m³

Length: 20 ft

Max. payload per wagon: 59 t

Loaded goods:
light bulk materials

Unloading:
forklift or stationary
unloading machine



product video



OpenSideTainer X40

(intermodal)

Loading volume
per container: 65 m³
per wagon: 130 m³

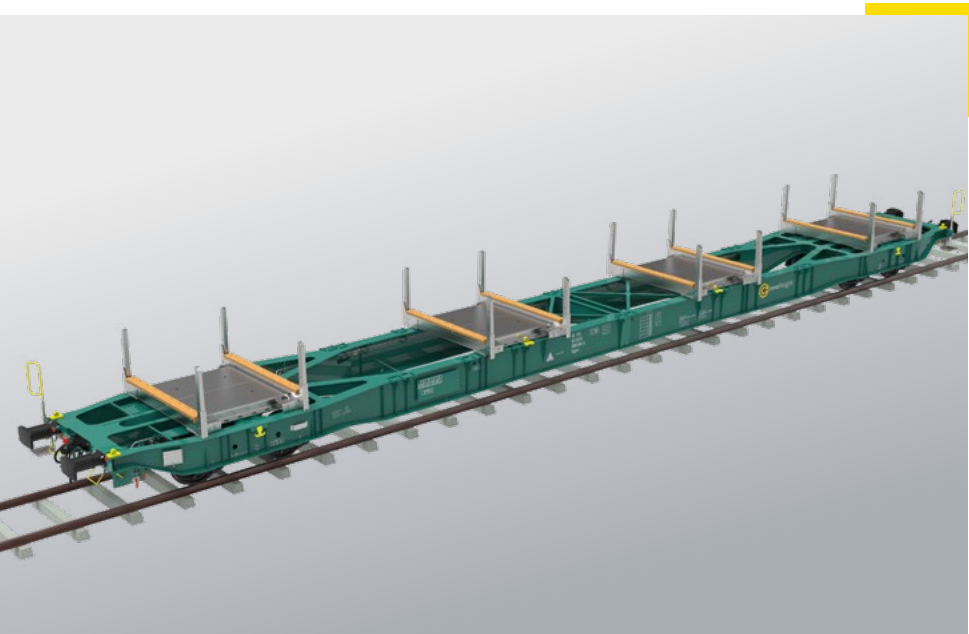
Length: 40 ft

Max. payload per wagon: 60 t

Loaded goods:
packaged goods, palletized goods

Unloading:
forklift





SteelPallet

- Length:** 10 ft
- Loading length:** max. 24.4 m
- Max. payload per wagon:** 67 t
- Loaded goods:**
steel slabs, blooms, pipes
- Unloading:**
unloading crane or forklift



Standard Reefer Container

- (intermodal)
- Container length:** 20 ft / 40 ft
- Max. payload of the wagon without container:** 68 t
- Besonderheit:**
GensetTainer for reefer energy supply integrated in the wagon frame

Standard ISO Container

- (intermodal)
- Container length:** 20 ft / 40 ft
- Max. payload of the wagon without container:** 70 t



60 ft Sgns container wagon

The modular Innofreight system naturally allows the transportation of all superstructures on standardized container wagons.

Since the Sgns container wagon is equipped with many container pins, it can accommodate various container sizes. It is mainly used for standard ISO containers with a length of 20 ft or 40 ft.

Bulk goods with low mass, such as wood chips or biomass, can be transported perfectly and without restrictions using these container wagons.

In order to achieve full weight optimization during transport however, it is advisable to opt for an InnoWaggon.



WoodTainer XXL

Loading volume
per container: 46 m³
per wagon: 138 m³

Length: 20 ft

Max. payload per wagon: 67 t

Loaded goods:
light bulk materials

Unloading:
forklift or stationary unloading machine



WoodTainer XXXL

Loading volume
per container: 57 m³
per wagon: 171 m³

Length: 20 ft

Max. payload per wagon: 65 t

Loaded goods:
light bulk materials (biomass)

Unloading:
forklift or stationary unloading machine





MonTainer XL

Loading volume
per container: 41 m³
per wagon: 123 m³

Length: 20 ft

Max. payload per wagon: 67 t

Loaded goods:
coal, coke

Unloading:
forklift or stationary
unloading machine



Pallet system

Loading width: 2,750 mm

Length: 10 ft

Max. payload per wagon: 68 t

Loaded goods:
pipes, timber

Unloading:
unloading crane or logstacker

AgroTainer OpenTop

(intermodal)

Loading volume
per container: 50 m³
per wagon: 100 m³

Length: 30 ft

Max. payload per wagon: 66 t

Loaded goods:
coke, short timber

Unloading:
truck tipping chassis or exvicator



AgroTainer XXXL

(intermodal)

Loading volume
per container: 50 m³
per wagon: 100 m³

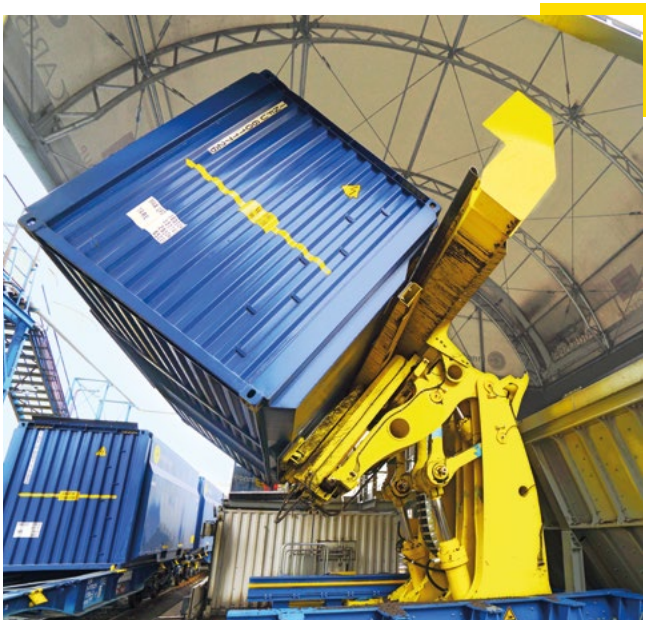
Length: 30 ft

Max. payload per wagon: 66 t

Loaded goods:
cereals, sugar, palletized goods

Unloading:
truck tipping chassis, excavator
or forklift





Stationary unloading machine with dedusting system



Natural gypsum unloading with rotary forklift



Stationary unloading machine for biomass



Biomass unloading with rotary forklift

